

## TB-20·20F

### Features

1. Excellent durability ensured by unique internal structure (hemispherical valve, etc).
2. The upper plug is made of stainless steel, and is excellent in wear resistance.
3. Reliable performance due to all stainless steel made internal parts and the unique internal structure.
4. Super energy saving since intermittent operation removes air adiabatic wall in the heat exchanger and increases heat efficiency considerably.



### Specifications

Model		TB-20	TB-20F	
Nominal Size		15A, 20A, 25A		
Connection		JIS Rc screwed	EN PN25 flanged JIS 20K FF flanged	JIS 10K FF flanged
Application		Steam condensate		
Working Pressure	(A)	0.01-0.3 MPa		
	(B)	0.2-0.6 MPa		
	(C)	0.3-1.0 MPa		
	(D)	0.6-1.6 MPa	—	
Max. Temperature		220°C		
Material	Body	Ductile cast iron		
	Valve	Stainless steel (Heat treated)		
	Valve seat	Stainless steel (Heat treated)		

• Available with ASME flanged.

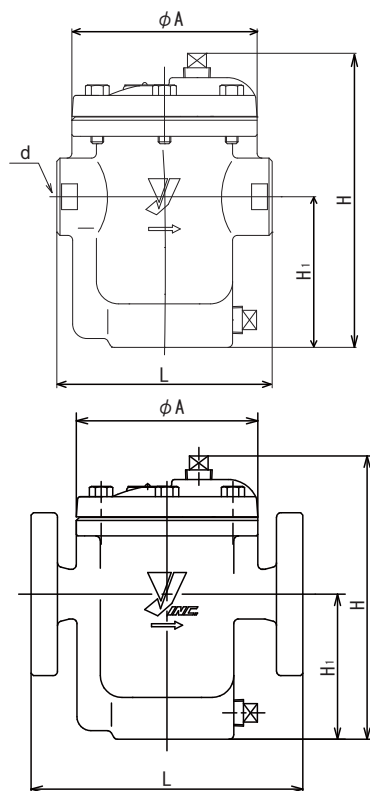
### Dimensions (mm) and Weight (kg)

#### ● Screwed (JIS Rc)

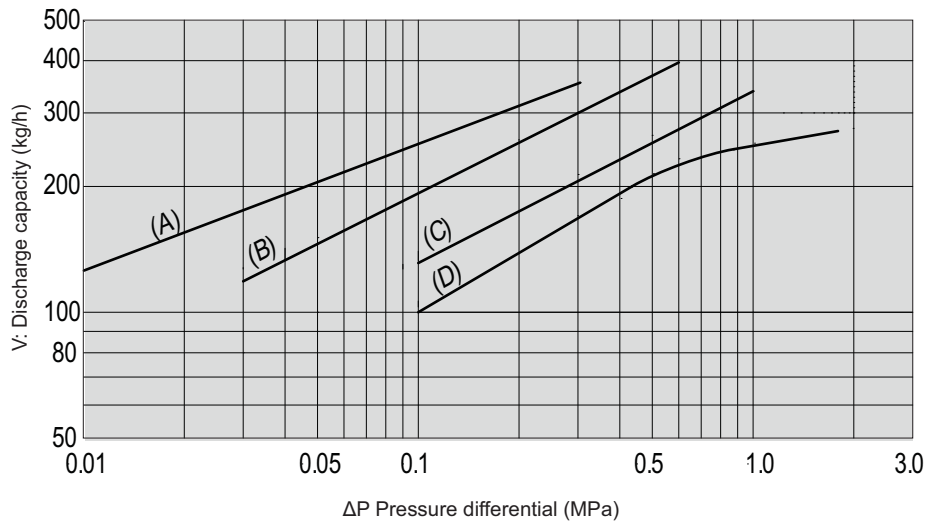
Nominal size	L	H	H <sub>1</sub>	A	Weight
15A	136	183	94	117	4.3
20A					
25A					

#### ● Flanged (JIS 20K FF)

Nominal size	L	H	H <sub>1</sub>	A	Weight
15A	175	183	94	117	5.4
20A					6.0
25A					6.3



## Discharge Capacity Chart



- The discharge capacity shown here is a continuous discharge capacity at the indicated differential pressure.
- In general, select a steam trap with a safety factor twice or threefold the regular level.

### INTERNATIONAL DEPT.

955-5 Miyamae, Irukadeshinden, Komaki, Aichi, 485-0084, Japan  
 Phone: 81-568-75-4432 Fax: 81-568-75-4763 E-mail: [intntl@yoshitake.co.jp](mailto:intntl@yoshitake.co.jp)

### YWT SALES DIV.

222 Moo.3 T.Banbung A.Banbung Chonburi 20170, Thailand  
 Phone: 66-038-110-003 Fax: 66-038-110-012 E-mail: [intntl@yoshitake.co.jp](mailto:intntl@yoshitake.co.jp)

**YOSHITAKE**  
<http://www.yoshitake.jp>