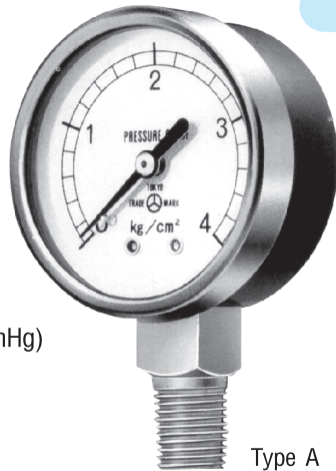


## SMALL PRESSURE GAUGE

Pressure gauge suitable for use with all types of small and lightweight equipment and units.

- **Size** : 40φ / 50φ
- **Pressure range** : Pressure gauge  
0Mpa~5Mpa (40φ : to 1.5Mpa)  
(0kg/cm<sup>2</sup> ~ 50kg/cm<sup>2</sup> (40φ : to 15kg/cm<sup>2</sup>)  
Vacuum gauge - 0.1Mpa~0Mpa (76cmHg~0cmHg)
- **Shape of casing** : Standard case, Type A/Type D4
- **Connecting thread** : R<sup>1</sup>/<sub>8</sub> ·<sup>1</sup>/<sub>4</sub>
- **Accuracy** : ±1.5%F.S.

FOR WATER, AIR



Type A



Type D4