

TSF-10S, 10SF, 11S, 11SF



■ Features

1. The TSF-10S/10SF/11S/11SF can discharge condensate effectively without retention, and realize energy saving steam system without steam loss.
2. All-stainless steel construction provides great durability and corrosion resistance.
3. Incorporated thermostatic air vent discharges air inside the piping and shortens warming-up time.
4. By turning the cock, it is possible to meet various flow direction such as horizontal or vertical installation.
Flow direction can be switched easily without disassembly such as detaching the cover.
5. Since the main parts are installed on the cover, it is possible to disassemble the cover with the body installed on the piping so the inspection and parts replacement can be conducted easily.



TSF-10S, 11S

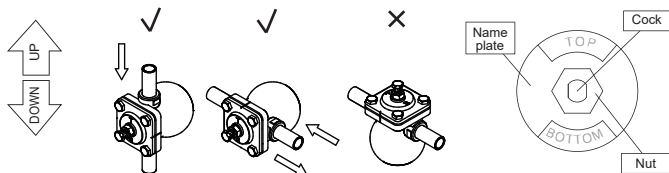


TSF-10SF, 11SF

■ Specifications

Model	TSF-10S	TSF-10SF	TSF-11S	TSF-11SF
Nominal size	15A-25A		25A-50A	
Application	Steam condensate			
Working pressure	TSF-1□S□-5: 0.01-0.5 MPa TSF-1□S□-10: 0.01-1.0 MPa TSF-1□S□-21: 0.01-2.1 MPa			
Maximum temperature	220°C			
Material	Body			
	Cast stainless steel			
	Float			
Stainless steel				
Valve, valve seat				
Stainless steel				
Connection	JIS Rc screwed NPT screwed	JIS 10K FF flanged JIS 20K FF flanged ASME Class 150 flanged ASME Class 300 flanged EN PN25 flanged	JIS Rc screwed NPT screwed	JIS 10K FF flanged JIS 20K FF flanged ASME Class 150 flanged ASME Class 300 flanged EN PN25 flanged

■ Caution for Installation



Adjust direction of the name plate in no pressure condition after installation.

Fix the cock with spanner and loosen the nut. Turn the cock and adjust direction of the name plate to position "TOP" and "BOTTOM" signs on upside and downside respectively. Fix the cock with spanner and fasten the nut after adjustment.

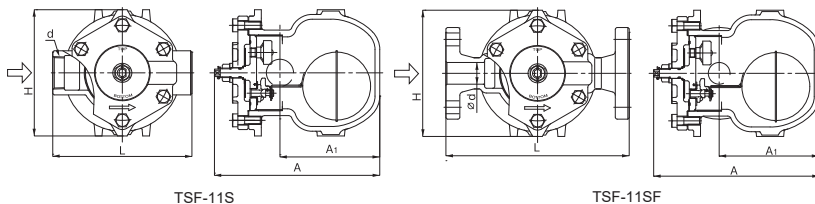
■ Dimensions (mm) and Weights (kg)

• TSF-11S

Nominal size	d	L	A	A ₁	H	Weight
25A	Rc 1	190	242	146.5	186	9.1
32A	Rc 1-1/4	190	242	146.5	186	9.2
40A	Rc 1-1/2	205	242	146.5	186	9.4
50A	Rc 2	220	242	146.5	186	9.7

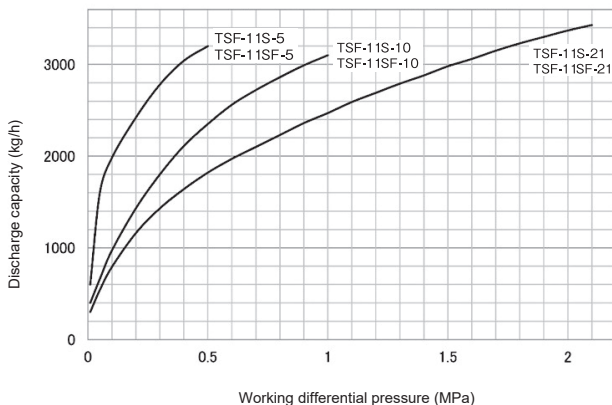
• TSF-11SF

Nominal size	L	A	A ₁	H	Weight(JIS 10K)	Weight(JIS 20K)
25A	270	242	146.5	186	11.7	12.0
32A	270	242	146.5	186	12.6	13.0
40A	280	242	146.5	186	13.0	13.5
50A	290	242	146.5	186	14.2	14.7



■ Maximum Continuous Discharge Capacity Chart

• TSF11S, 11SF



The discharge capacity shown in the charts on the above is the maximum value. In designing a system, select a steam trap with a sufficient safety factor (more than two times the regular level).